



Questions, call : 1-800-MOTO-USA

<http://www.cannondale.com/motorsports>

Cannondale Motorsports Service Bulletin

BULLETIN : SB02-007

MODELS : 2002 Blaze 440 up to and including VIN 5B6DB31382B000090
2002 Moto 440 up to and including VIN 5B6EB31312B000095
Any ATV installed with Cannondale competition headlight covers

ISSUED : 3/26/02

SUBJECT : (1) Competition headlight cover installation, (2) Warning label

CONDITION : This bulletin covers two subjects:

(1) Competition model ATVs are shipped with special competition headlight covers. In order to install these covers, the headlight bulb housing must be removed from the mounting assembly. If the headlight housing is removed from the assembly and the remaining components are not reinstalled and the nut of the assembly tightened securely, damage to the main frame fender support bracket tab can result. This small aluminum tab is welded to the main frame and it receives added strength from the "triangulation" of the properly installed headlight mounting assembly. This tab can break away from the frame if the tab remains unsupported during vibration coupled with the weight of the fender. When the tab breaks the front fender will lose support and can be damaged.

(2) Competition headlight covers are for daylight/closed-course competition use only.

SOLUTION : (1) When installing the competition headlight covers, start by making sure the ignition switch is in the OFF position. Remove the main fuse. Loosen the standard headlight cover bolts and lift the cover off. The cover screws and washers are retained in the cover by a small locking washer. Disconnect the harness lead from the bulb unit. Remove the nut and washer from the mounting assembly. Hold your hand under the assembly to catch the components secured in place by the bolt and slide the bolt out slowly. Remove only the headlight bulb housing. Reassemble the components as indicated in the drawing on page 2 without the bulb housing and tighten the nut securely. Cover the harness lead end with electrical tape and zip tie the lead to the larger spacer so that the lead does not hang freely. Position the competition headlight cover and tighten the bolts securely. **See page 2.**

(2) Apply the competition headlight cover warning label P/N 315-6000729 to each headlight cover in the location indicated. **See page 3.** Contact consumers who have purchased affected units and provide them with the owner's manual addenda P/N 6001025-A1 and apply the warning labels.

PARTS : Copies of the addenda to the 2002 ATV Owner's Manual and the warning labels will be shipped to dealerships with the affected units free of charge. As with any vehicle warning label or owner's manual information, consumers can contact us directly for free replacements by calling 1-800-MOTO-USA.

If you have any questions about this service bulletin, call toll free 1-800-MOTO-USA.

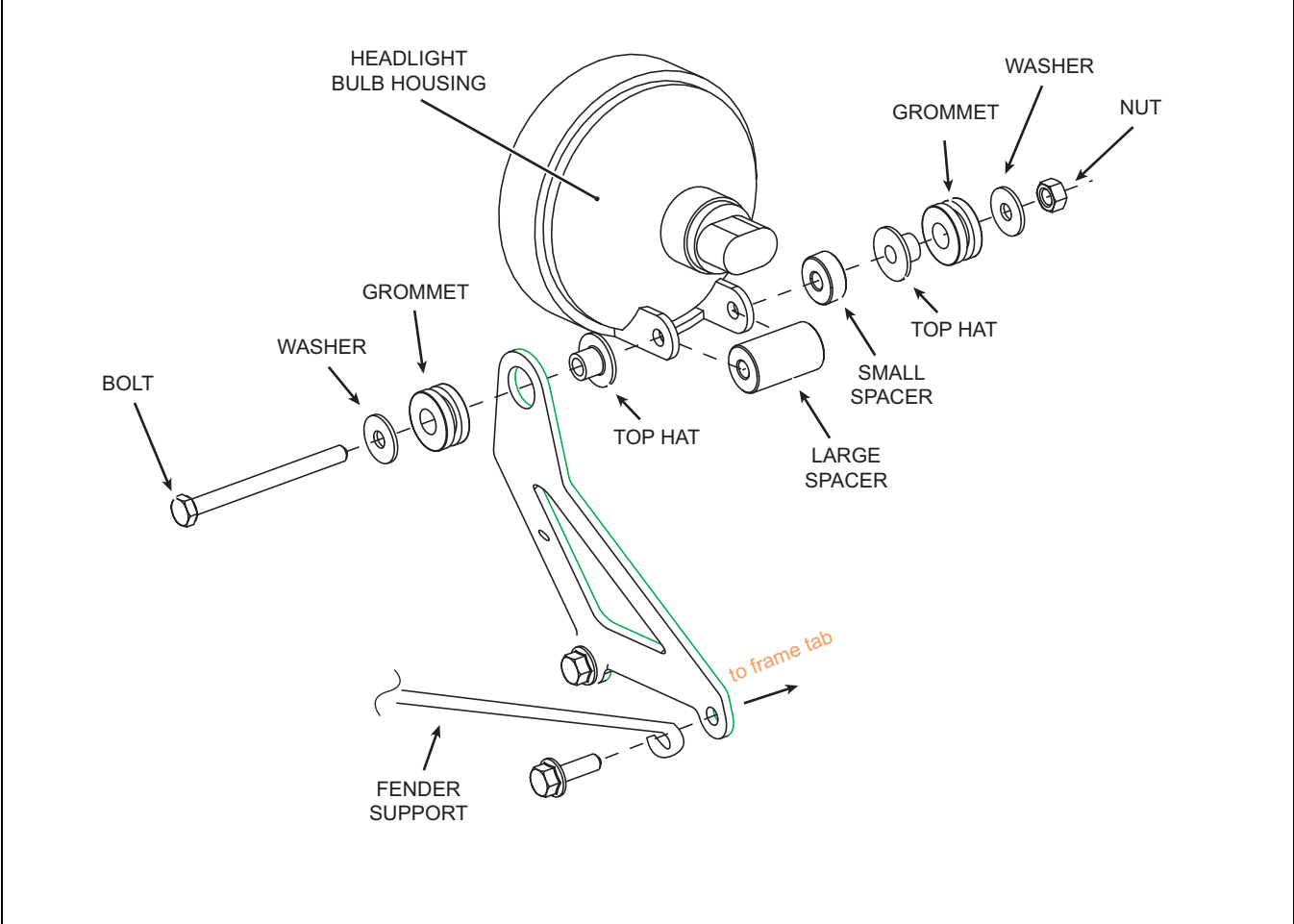
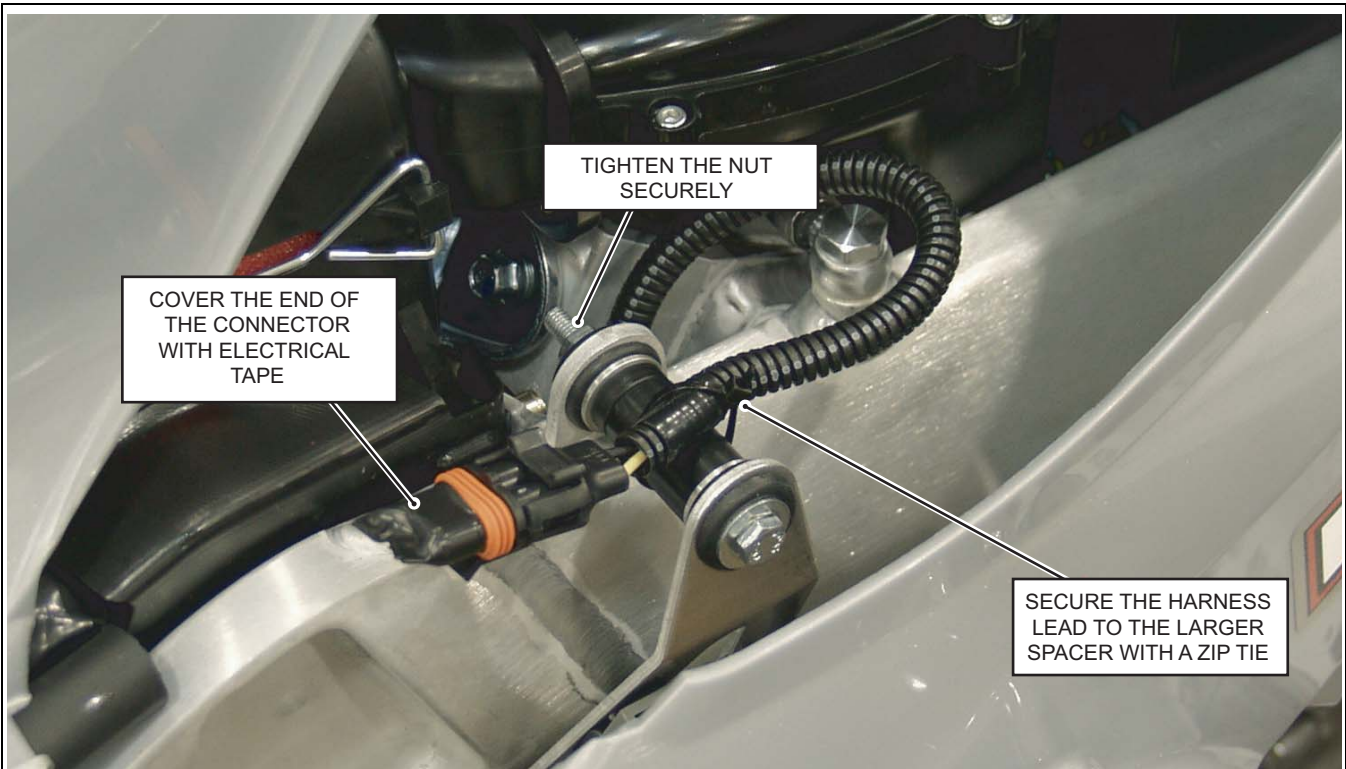
Information is subject to change without notice.

SB02-007.fm

© 2001 Cannondale Corporation - All Rights Reserved

Printed : 3/26/02

(1) CORRECT HEADLIGHT MOUNTING REASSEMBLY



(2) WARNING LABEL APPLICATION



AFFIX THIS LABEL ON BOTH THE LEFT
AND RIGHT COMPETITION HEADLIGHT COVERS
IN THE LOCATIONS INDICATED

OWNER'S MANUAL ADDENDA (EXAMPLE)

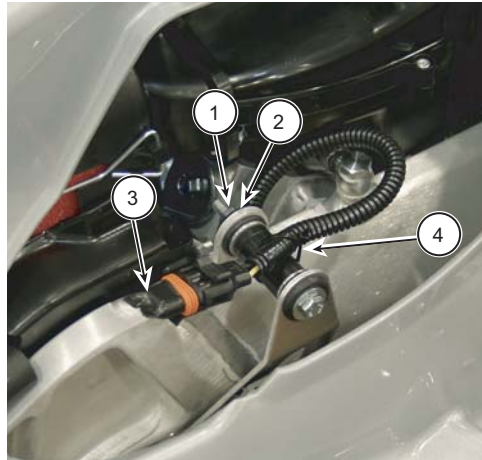
The following illustration shows examples of the labels to be applied to the "Addenda" section of the 2002 ATV Owner's Manual - P/N 951-6001025. The actual adhesive labels have been shipped to dealerships with this service bulletin. These labels should be applied to the blank pages of the addenda section of the customer's

manual. These labels can be obtained free of charge and directly by consumers. To get the labels call 1-800-MOTO-USA and ask our reps for the 2002 Owner's Manual Addenda 1 - P/N 6001025-A1.

Label 1

Competition headlight cover installation

1. Make sure the ignition switch is in the OFF position.
2. Remove the fuse.
3. Loosen the standard headlight cover bolts and lift the cover off. The cover screws and washers are retained by the cover by a small locking washer.
4. Disconnect the harness lead from the bulb unit.
5. Remove the nut (1) and washer (2) from the mounting assembly. Hold your hand under the assembly to catch the components secured in place by the bolt and slide the bolt out slowly.
6. Remove only the headlight bulb housing.
7. Reassemble the components as indicated without the bulb housing and tighten the nut securely.
8. Cover the harness lead end (3) with electrical tape and zip tie (4) the lead to the larger spacer so that the lead does not hang freely.
9. Position the competition headlight cover and tighten the bolts securely.



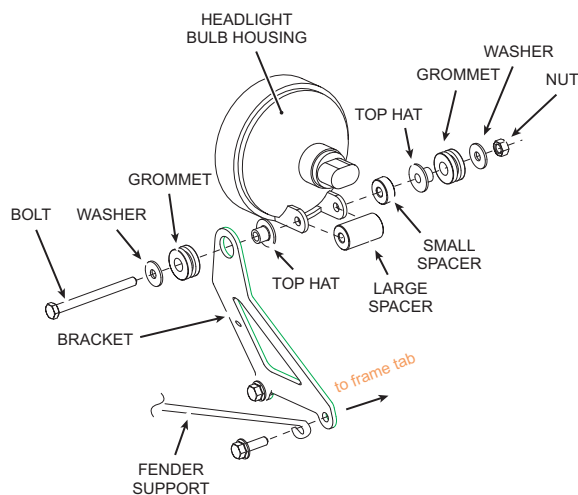
CAUTION:

After removing the headlight bulb housing, re-assemble all mounting components and tighten the nut securely. Damage to the main frame fender support tab can result if the assembly is not tightened securely or if components other than the headlight bulb housing are not reinstalled.

6001025-A1 (Label 1 of 2)

Label 2

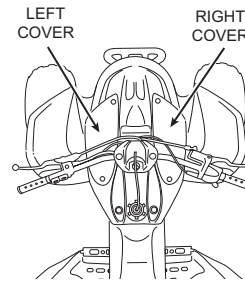
Headlight assembly



6001025-A1 (Label 2 of 2)

Warning label locations

Affix label to the outside surface of both the left and right competition headlight covers



WARNING

THIS COVER FOR DAYLIGHT, CLOSED-COURSE COMPETITION USE ONLY

- Follow instructions in Owner's Manual for cover and standard headlight assembly instructions.

Operating without lighting at night, dusk, or dawn increases your chances of having an accident. You can be severely injured or killed.

READ YOUR OWNER'S MANUAL

315-6000729