



Technical Publications

SERVICE BULLETIN

Dear Cannondale Motorsports Dealer,

A new design in the MX400's clutch pressure plate allows for a smoother engagement. Your dealership received a motorcycle that was manufactured prior to the introduction of this design. Cannondale would like all MX400 owners to benefit from the improved performance the new design affords.

This document enables you to replace the factory installed clutch pressure plate with the new design. During the replacement procedure, it is recommended that you inspect the condition of both the metallic and friction clutch plates for signs of bending or cracking. Follow the procedure carefully.

Best Regards,

The Cannondale Aftersales Support Team

Bulletin Number	Issue Date	Model(s) Affected	Subject
SBM00001	8/4/00	2001 MX400 - up to and including VIN 5B6AA11C21B000034	Clutch pressure plate replacement / disc inspection

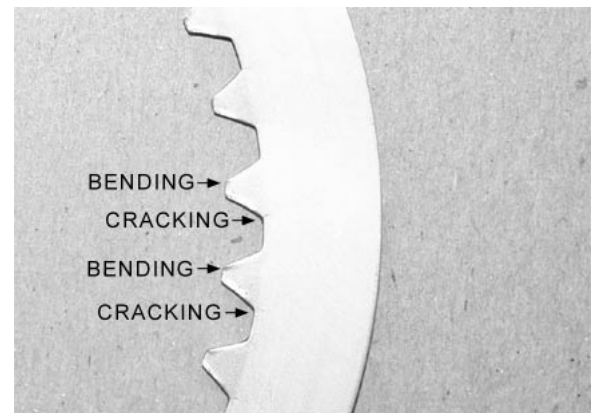
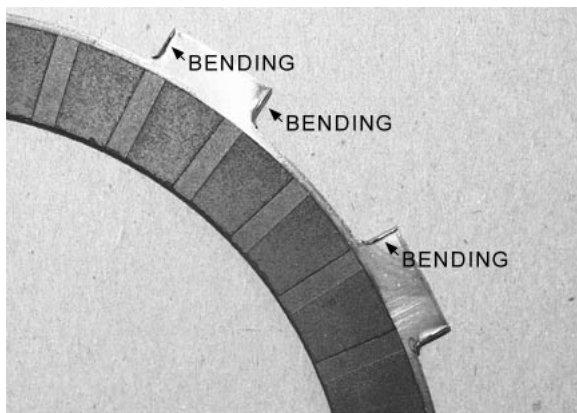
MX400 CLUTCH PRESSURE PLATE REPLACEMENT / DISC INSPECTION

- 1 Secure the motorcycle in a vertical position on a suitable stand.

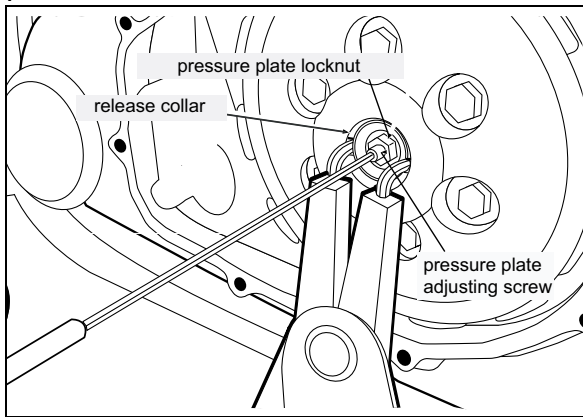
NOTE :The transmission oil level is below the clutch cover and the oil does not need to be drained to perform this procedure. The clutch cover seal does not need to be replaced for this procedure.

- 2 Turn the clutch lever quick-adjuster until the maximum amount of freeplay is achieved.
- 3 Remove the shift lever bolt and remove the shift lever.
- 4 Remove clutch cover.
- 5 Remove the six bolts, washers, and springs securing the clutch pressure plate. Loosen the bolts in stages in a criss-cross pattern.
- 6 Remove the pressure plate.

NOTE:If the motorcycle has been ridden, remove the clutch plates and inspect the friction plates (below left) for bending at the tabs that contact the clutch basket and the metallic plates (below right) for cracking at the tabs that contact the clutch hub. Replace the plates if these conditions are found. A set of plates was sent with the New Dealer Parts Package.



- 7 Install the new pressure plate.
- 8 Install the six bolts, washers, and springs. Start the bolts several turns by hand and tighten in stages in a criss-cross pattern. TORQUE : 3.3lbf-ft (4.5Nm)
- 9 Loosen the pressure plate locknut. Hold the clutch release collar using snap ring pliers and turn the clutch plate adjusting screw until the actuating arm is horizontal to the crankcase



- 10 Tighten the pressure plate locknut. TORQUE: 3.3lbf-ft (4.5Nm)
 - 11 Install the clutch cover and bolts. TORQUE: 3.3lbf-ft (4.5Nm)
 - 12 Install the shift lever and bolt. TORQUE: 3.3lbf-ft (4.5Nm)
 - 13 Loosen the clutch inline clutch cable locknut and adjust clutch cable freeplay. FREEPLAY : 0.08-0.16in. (2-4mm)
 - 14 If all the adjustment has been taken up at the inline cable adjuster and freeplay is still out of specification. Adjust the cable at the lever.
- NOTE: Be sure to tighten inline cable locknut after adjusting it.*
- 15 To adjust clutch cable freeplay at the lever, turn the quick adjuster to obtain specified freeplay. FREEPLAY : 0.08-0.16in. (2-4mm)
 - 16 Test ride the motorcycle.

REIMBURSEMENT

Follow the procedure for completing and submitting the Warranty Claim Form in the service policy section of the Motorcycle *Parts and Service Policy Manual*.

On the *Warranty Claim Form*

REPAIR INFORMATION

Date Problem Occurred:..... leave blank.
 Date Problem Repaired..... date repaired.
 Problem Code 360.
 Labor Code..... TC020.
 Labor Time (.3).

TYPE OF CLAIM

Service Campaign: check.
Authorization Number..... SBM00001
Problem Description: "Perform Service Bulletin SBM00001".
Repair Performed leave blank.

PRIMARY FAILED PART NUMBER : 563-50001708.

PRIMARY FAILED PART DESCRIPTION : Pressure plate, clutch.

If the clutch plates were replaced enter the part numbers, quantity and description in the **ADDITIONAL PART NUMBERS REPLACED** section.

563-5001499, qty. 10, Disc, metallic, clutch.

563-5000333, qty 9, Disc, friction, clutch

A dealership representative must sign the form. If the motorcycle has been delivered the owner must also sign the form.

Mail the completed form within 10 days of the date repaired to the Form only address at the bottom of the form.

It is not necessary to tag and hold the old pressure plate or clutch plates. Please discard them.